

Differential scaling within an insect compound eye

Article (Published Version)

Perl, Craig D and Niven, Jeremy E (2016) Differential scaling within an insect compound eye. *Biology Letters*, 12 (3). ISSN 1744-9561

This version is available from Sussex Research Online: <http://sro.sussex.ac.uk/60559/>

This document is made available in accordance with publisher policies and may differ from the published version or from the version of record. If you wish to cite this item you are advised to consult the publisher's version. Please see the URL above for details on accessing the published version.

Copyright and reuse:

Sussex Research Online is a digital repository of the research output of the University.

Copyright and all moral rights to the version of the paper presented here belong to the individual author(s) and/or other copyright owners. To the extent reasonable and practicable, the material made available in SRO has been checked for eligibility before being made available.

Copies of full text items generally can be reproduced, displayed or performed and given to third parties in any format or medium for personal research or study, educational, or not-for-profit purposes without prior permission or charge, provided that the authors, title and full bibliographic details are credited, a hyperlink and/or URL is given for the original metadata page and the content is not changed in any way.



Cite this article: Perl CD, Niven JE. 2016
Differential scaling within an insect compound
eye. *Biol. Lett.* **12**: 20160042.
<http://dx.doi.org/10.1098/rsbl.2016.0042>

Received: 15 January 2016

Accepted: 22 February 2016

Subject Areas:

evolution, ecology, neuroscience

Keywords:

scaling, wood ant, *Formica rufa*, grade shift,
slope shift, facet diameter

Author for correspondence:

Jeremy E. Niven

e-mail: j.e.niven@sussex.ac.uk

Evolutionary biology

Differential scaling within an insect compound eye

Craig D. Perl and Jeremy E. Niven

School of Life Sciences, University of Sussex, Falmer, Brighton BN1 9QG, UK

JEN, 0000-0001-7786-5254

Environmental and genetic influences cause individuals of a species to differ in size. As they do so, organ size and shape are scaled to available resources whilst maintaining function. The scaling of entire organs has been investigated extensively but scaling within organs remains poorly understood. By making use of the structure of the insect compound eye, we show that different regions of an organ can respond differentially to changes in body size. Wood ant (*Formica rufa*) compound eyes contain facets of different diameters in different regions. When the animal body size changes, lens diameters from different regions can increase or decrease in size either at the same rate (a 'grade' shift) or at different rates (a 'slope' shift). These options are not mutually exclusive, and we demonstrate that both types of scaling apply to different regions of the same eye. This demonstrates that different regions within a single organ can use different rules to govern their scaling, responding differently to their developmental environment. Thus, the control of scaling is more nuanced than previously appreciated, diverse responses occurring even among homologous cells within a single organ. Such fine control provides a rich substrate for the diversification of organ morphology.

1. Introduction

In natural environments, adults from a single species can vary enormously in body size owing to a combination of genetic and environmental factors. Organ size changes to accompany changes in body size, a process known as allometric scaling [1,2]. Theories of organ scaling [2,3] have focused on entire organs and how their relative proportions change with whole body size, largely ignoring changes in the size and number of cells within organs (but see [4]). Here, we investigate scaling within an organ, the compound eye of an insect.

Organ scaling has been studied in numerous taxa but particularly in holometabolous insects [5–9] because the organs of adults of these insects develop during pupation from cellular monolayers, called imaginal discs [10,11]. Insect compound eyes provide an opportunity to explore scaling within an organ because the facet array provides a read-out at cellular-level resolution of relative investment in individual facets [4,12]. During development individual retinal cells arise from an ommatidial progenitor [13,14] and do not contribute to adjacent ommatidia as they differentiate [15]. Therefore, facet scaling provides some information about resource allocation at the cellular level within an imaginal disc during development.

We studied the scaling of wood ant (*Formica rufa* L.) worker compound eyes. The area of their compound eyes as well as the numbers of facets and their diameters increase with body size, though they do so with negative allometry. We found substantial heterogeneity in scaling of facet diameter

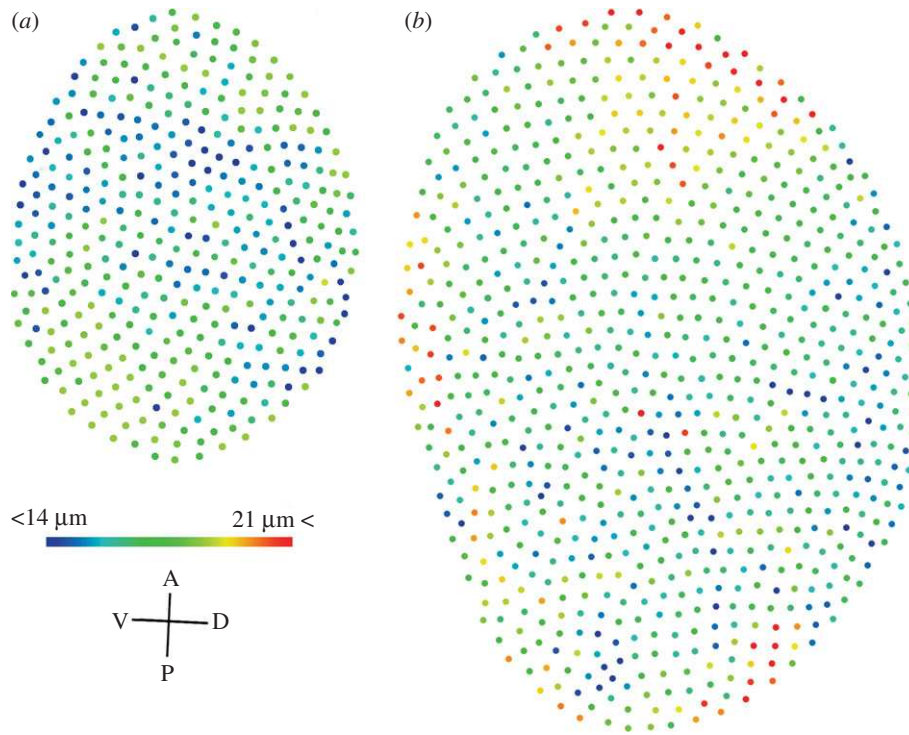


Figure 1. Regional differences exist in the diameters of facets from compound eyes of wood ant workers. (a) A heat-map of the diameter of each facet from a single wood ant worker compound eye, 382 facets in total. (b) As in (a) but for an eye from a larger worker, 815 facets in total. A, P, V, D: anterior, posterior, ventral, dorsal.

between different regions of the compound eye, demonstrating hitherto unknown control of scaling of structures within organs.

2. Material and methods

(a) Animals

Formica rufa (Hymenoptera: Formicidae) colonies were collected from Ashdown Forest, Sussex, UK (N 51 4.680, E 0 1.800) between June 2013 and August 2014, and maintained indoors at 21°C under a 12 L : 12 D cycle.

(b) Specimen preparation

Individual ants were restrained and transparent nail varnish (Rimmel London, UK) was applied to both compound eyes to create a cast. Once dried, the casts were removed, flattened and mounted onto 12.5 mm specimen stubs (Agar Scientific, UK). The rear left femur of each ant was used as a proxy for the size of the ant [16]. Specimens were imaged using a scanning electron microscope (S420 Stereoscan, LEO Electron Microscopy Ltd., Germany).

(c) Measurements

Nine facet diameters from four separate eye regions were selected at random and measured from 66 ants (2376 facets in total) from three colonies. The diameters of every facet from a representative small and large ant were measured to produce eye 'heatmaps'. Diameters were measured from scanning electron micrographs using ImageJ v. 1.48 [17].

(d) Statistics

Statistics were calculated using R v. 3.1.2. [18]. Facet diameter scaling was investigated with linear mixed effect models by using the `lme` function from the 'nlme' package [19]. Custom contrast matrices were used to make *post hoc* multiple pair-wise

comparisons (*t*-tests) of linear mixed effect models with the estimable function from the 'gmodels' package [20].

3. Results

We measured the facet diameters of the eyes of small and large workers (figure 1), creating maps of facet diameters [21]. These maps revealed differences in facet diameters between the large and the small workers, as well as regions of the eye in which facets differed systematically in diameter. In the eye of the larger worker, the largest facets are found mainly in the anterior–dorsal region, whereas in the smaller worker eye, the largest facets are restricted to the anterior–dorsal and ventral–posterior regions (figure 1). To quantify differences in facet diameter between regions and across a range of worker body sizes, we measured facet diameters from four regions (anterior, posterior, ventral and dorsal) of the compound eye.

Comparisons among eye regions showed that, for a given body size, facets differed in absolute diameter between regions within an individual ant. Facet diameters were, however, larger across all regions of the larger worker eyes than in those of smaller workers. The intercept of the posterior region was significantly higher than that of the anterior region ($t_{65,188} = 2.69$, $p = 0.008$). The dorsal region had a significantly lower intercept than either the posterior ($t_{65,188} = 3.28$, $p = 0.001$) or ventral eye regions ($t_{65,188} = 2.05$, $p = 0.04$). There were no differences in the intercepts of the remaining regions ($t_{65,188} < 1.47$, $p > 0.1$). Thus, as workers increase in size, the facets of some regions increase in diameter at the same rate, producing grade shifts in their allometric scaling relationships (figure 2).

Comparison among eye regions also revealed significant differences in the slope of the scaling relationship, the rate at which facet diameter increased with increasing body size. The facet diameters in the anterior ($t_{65,188} = 3.36$, $p = 0.001$) and dorsal regions of the eye ($t_{65,188} = 2.65$, $p = 0.009$)

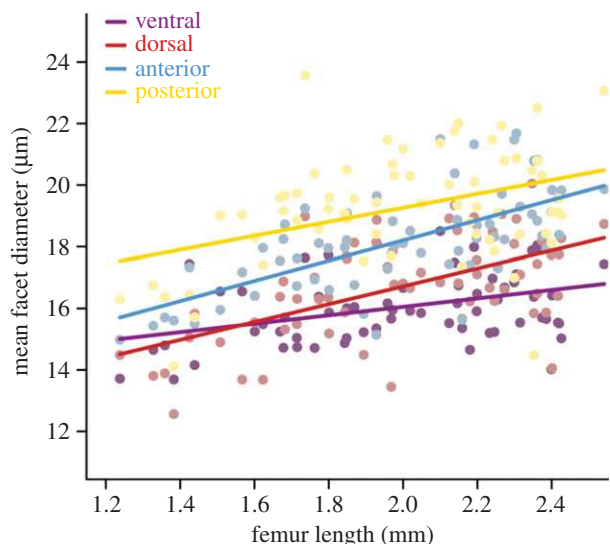


Figure 2. The diameters of facets from different eye regions scale differentially. The graphs show the scaling of facets from the anterior, posterior, dorsal or ventral regions of the compound eye for workers from three wood ant nests.

increased with body size at a faster rate than those from the ventral eye region. There were no slope differences between the remaining regions ($t_{65,188} < 1.81$, $p > 0.07$). Thus, as workers increase in size, facets in the anterior–dorsal region increase in diameter at a greater rate than the rest of the eye.

4. Discussion

Comparison of facet diameters among different regions of the wood ant compound eye shows that they scale heterogeneously. In some regions, large facets increase in diameter at the same rate as other absolutely smaller facets in other regions, indicative of grade shifts. This implies that facets in these regions are of equal importance, and that additional resources associated with increased body size are allocated proportionately. Some regions differ in slope of their scaling relationships, showing that available resources are disproportionately allocated within the developing eye imaginal disc, larger individuals investing more in the anterior and dorsal regions of the compound eye than the ventral region.

(a) Proximate mechanisms

We propose that individual cells within an imaginal disc use nutrients to different extents. Growth and nutrition are linked by insulin production [22,23]. Cells may show regional differences in their expression of insulin receptors, so that when exposed to the same increased levels of insulin-like peptides those that express more insulin receptors will grow at a faster rate. This mechanism is analogous to that proposed to account for the differential growth of imaginal discs underlying

exaggerated traits and could provide the basis for the evolution of organ shape changes [3]. One putative mechanism is that adjusting the number of insulin and ecdysone receptors in different parts of an imaginal disc could alter the shape of an entire organ. Such changes could, for example, contribute to the evolution of the horns of adult males from different species of *Onthophagus*, which differ in the number of prongs and their shape [24].

(b) Functional implications

Increases in facet diameter improve sensitivity by improving photon capture [25]. Thus, differences in facet diameter within the wood ant compound eye are presumably a consequence of needing regions of high sensitivity and resolution with limited resources and space available. Such specialized regions are common in compound eyes and are typically associated with specific aspects of behaviour where high performance is required, such as mate or prey detection [25]. However, previous studies have not considered that particular regions of the compound eye may differ from one another in terms of their scaling [26].

Slope shifts indicate differential investment in particular regions depending on body size. Such differential investment may be related to task differentiation; despite lacking distinct morphological castes, larger ants forage further from the nest than smaller ants [27], which may necessitate greater investment in vision. However, rhabdom structure and inter-ommatidial angles are needed to determine the impact of these differences in scaling upon wood ant vision.

More generally, increased investment in specific regions of the compound eye or other sensory structures may confer an advantage on larger individuals of a particular species in specific tasks, especially when such regions are linked to the detection of mates or prey. This raises the possibility that eye regions such as the love spot of male houseflies [28] may also show scaling indicative of greater investment in larger individuals. This would produce exaggerated sensory structures analogous to the exaggerated morphological traits more typically associated with sexual selection, such as *Onthophagus* beetle horns [24]. However, the lattice structure of the compound eye may constrain investment in such regions, preventing them from showing the extreme positive allometry of beetle horns.

Data accessibility. Data deposited in Dryad: <http://dx.doi.org/10.5061/dryad.t5h1j>.

Authors' contributions. C.D.P. and J.E.N. designed the experiments/analysis and wrote the paper. C.D.P. performed the experiments/analysis. C.D.P. and J.E.N. approved the final version and are accountable for all aspects of the work.

Competing interests. We have no competing interests.

Funding. C.D.P. was supported by the BBSRC/University of Sussex. J.E.N. was supported by the Royal Society.

Acknowledgements. We thank two referees for insightful comments.

References

- Huxley JS, Tessier G. 1936 Terminology of relative growth. *Nature* **137**, 780–787. (doi:10.1038/137780b0)
- Shingleton AW, Estep CM, Driscoll MV, Dworkin I. 2009 Many ways to be small: different environmental regulators of size generate distinct scaling relationships in *Drosophila melanogaster*. *Proc. R. Soc. B* **276**, 2625–2633. (doi:10.1098/rspb.2008.1796)
- Emlen DJ, Warren IA, Johns A, Dworkin I, Lavine LC. 2012 A mechanism of extreme growth and reliable signaling in sexually selected ornaments and weapons. *Science* **337**, 860–864. (doi:10.1126/science.1224286)
- Stevenson RD, Hill MF, Bryant PJ. 1995 Organ and cell allometry in Hawaiian *Drosophila*: how to make

- a big fly. *Proc. R. Soc. B* **259**, 105–110. (doi:10.1098/rspb.1995.0016)
5. Emlen DJ. 2008 The evolution of animal weapons. *Ann. Rev. Ecol. Syst.* **39**, 387–413. (doi:10.1146/annurev.ecolsys.39.110707.173502)
 6. Berrigan D. 1991 The allometry of egg size and number in insects. *Oikos* **60**, 313–321. (doi:10.2307/3545073)
 7. Tomkins JL. 1999 Environmental and genetic determinants of the male forceps length dimorphism in the European earwig *Forficula auricularia* L. *Behav. Ecol. Sociobiol.* **47**, 1–8. (doi:10.1007/s002650050643)
 8. Miyatake T. 1993 Male–male aggressive behavior is changed by body size difference in the leaf-footed plant bug, *Leptoglossus australis*, Fabricius (Heteroptera: Coreidae). *J. Ethol.* **11**, 63–65. (doi:10.1007/BF02350007)
 9. Nijhout HF, Grunert LW. 2010 The cellular and physiological mechanism of wing–body scaling in *Manduca sexta*. *Science* **330**, 1693–1695. (doi:10.1126/science.1197292)
 10. Morata G, Lawrence PA. 1979 Development of the eye-antenna imaginal disc of *Drosophila*. *Dev. Biol.* **70**, 355–371. (doi:10.1016/0012-1606(79)90033-2)
 11. Currie DA, Milner MJ, Evans CW. 1988 The growth and differentiation *in vitro* of leg and wing imaginal disc cells from *Drosophila melanogaster*. *Development* **102**, 805–814.
 12. Shingleton AW, Das J, Vinicius L, Stern DL. 2005 The temporal requirements for insulin signaling during development in *Drosophila*. *PLoS Biol.* **3**, e289. (doi:10.1371/journal.pbio.0030289)
 13. Egelhaaf A, Altenfeld H, Hoffmann H-U. 1988 Evidence for the priming role of the central retina cell in ommatidium differentiation of *Ephesia kuehniella*. *Dev. Gene Evol.* **197**, 184–189. (doi:10.1007/bf00427922)
 14. Friedrich M, Rambold I, Melzer RR. 1996 The early stages of ommatidial development in the flour beetle *Tribolium castaneum* (Coleoptera; Tenebrionidae). *Dev. Gene Evol.* **206**, 136–146. (doi:10.1007/s004270050039)
 15. Wolff T, Ready DF. 1991 The beginning of pattern formation in the *Drosophila* compound eye: the morphogenetic furrow and the second mitotic wave. *Development* **113**, 841–850.
 16. Espadaler X, Gómez C. 2001 Formicine ants comply with the size-grain hypothesis. *Funct. Ecol.* **15**, 136–138. (doi:10.1046/j.1365-2435.2001.00490.x)
 17. Schneider CA, Rasband WS, Eliceiri KW. 2012 NIH Image to ImageJ: 25 years of image analysis. *Nat. Methods* **9**, 671–675. (doi:10.1038/nmeth.2089)
 18. R Core Team. 2014 *R: a language and environment for statistical computing*. Vienna, Austria: R Foundation for Statistical Computing.
 19. Pinheiro J, Bates D, DebRoy S, Sarkar D, orpR Core Team. 2014 nlme: Linear and nonlinear mixed effects models. R package version 3.1-117.
 20. Warnes GR, Bolker B, Thomas LT, Johnson RC. 2015 gmodels: Various R programming tools for model fitting. R package version 2.15.4.1.
 21. Schwarz S, Narendra A, Zeil J. 2011 The properties of the visual system in the Australian desert ant *Melophorus bagoti*. *Arthropod Struct. Dev.* **40**, 128–134. (doi:10.1016/j.asd.2010.10.003)
 22. Wu Q, Brown MR. 2006 Signaling and function of insulin-like peptides in insects. *Annu. Rev. Entomol.* **51**, 1–24. (doi:10.1146/annurev.ento.51.110104.151011)
 23. Nijhout HF, Riddiford LM, Mirth C, Shingleton AW, Suzuki Y, Callier V. 2014 The developmental control of size in insects. *WIREs Dev. Biol.* **3**, 113–134. (doi:10.1002/wdev.124)
 24. Emlen DJ, Marangelo J, Ball B, Cunningham CW. 2005 Diversity in the weapons of sexual selection: horn evolution in the beetle genus *Onthophagus* (Coleoptera: Scarabaeidae). *Evolution* **59**, 1060–1084. (doi:10.1111/j.0014-3820.2005.tb01044.x)
 25. Land MF. 1997 Visual acuity in insects. *Annu. Rev. Entomol.* **42**, 147–177. (doi:10.1146/annurev.ento.42.1.147)
 26. Everett A, Tong X, Briscoe AD, Monteiro A. 2012 Phenotypic plasticity in opsin expression in a butterfly compound eye complements sex role reversal. *BMC Evol. Biol.* **12**, 232. (doi:10.1186/1471-2148-12-232)
 27. Wright PJ, Bonser R, Chukwu UO. 2000 The size–distance relationship in the wood ant *Formica rufa*. *Ecol. Entomol.* **25**, 226–233. (doi:10.1046/j.1365-2311.2000.00253.x)
 28. Burton BG, Laughlin SB. 2003 Neural images of pursuit targets in the photoreceptor arrays of male and female houseflies *Musca domestica*. *J. Exp. Biol.* **206**, 3963–3977. (doi:10.1242/jeb.00600)